



ACS NATIONAL LUNG  
CANCER ROUNDTABLE

---

# LUNG CANCER SCREENING IMPLEMENTATION SCIENCE **SUMMIT**

MAY 13-14, 2026  
PHILADELPHIA, PA





# WELCOME MESSAGE

---



Dear Summit Participants,

The American Cancer Society National Lung Cancer Roundtable (ACS NLCRT) welcomes you to the Lung Cancer Screening Implementation Science Summit (LCS IS Summit). We hope your travels to Philadelphia were smooth, and that you have come ready to work together and engage in meaningful discussions on how to use an implementation science approach to accelerate the uptake of lung cancer screening, which is a strategic priority of the ACS NLCRT.

Previous meetings have focused on functionality of electronic medical records, and communications and outreach best practices. This summit will focus on evidence-informed systems change to increase lung cancer screening through an implementation science approach. The primary objective is to teach participants how to use an implementation science approach (frameworks and strategies) to accelerate uptake of evidenced-based lung cancer screening and to produce practical tools that participants can test in their own health systems. Ideally, we want to build a cohort of LCS IS champions who will use the insights and tools developed from the summit in their health systems and serve as leaders who can influence changes in practice.

We remain grateful to the American Cancer Society and our partners who make this critical work together possible. AbbVie, Agilent, AstraZeneca, Boehringer Ingelheim, Foundation Medicine, Johnson & Johnson, Lilly Oncology, Merck, Novocure, Pfizer, Regeneron, and Takeda all share the passion and conviction that we can make a difference in the lives of individuals affected by lung cancer when we come together, bringing our unique strengths and perspectives to find solutions to complex problems.

We are here today with a sense of urgency to accelerate the uptake of lung cancer screening so we can continue to improve the lives of individuals at risk for, living with or surviving lung cancer. Thank you for being an important part of this effort today and into the future!

With gratitude,



**Ella A. Kazerooni, MD,  
MS, FACR, FACC, FSAB**  
ACS NLCRT Chair



**Douglas E. Wood, MD,  
FACS, FRCSEd**  
ACS NLCRT Vice Chair



**Robert A. Smith, PhD,  
FSBI**  
ACS NLCRT ACS Chair



**Lauren S. Rosenthal,  
MPH**  
ACS NLCRT Strategic Director

# Land Acknowledgment

---

We would like to acknowledge that this meeting is being held on the traditional land of Indigenous peoples, specifically the Lenni-Lenape of Lenapehoking and the Poutaxat (Delaware Bay). As we work to improve the lives of people with cancer and their families through advocacy, research, and patient support, to ensure everyone has an opportunity to prevent, detect, treat, and survive cancer, we acknowledge and work to mitigate the cancer burden and health disparities in the Native and Indigenous communities and communities of color.

## Helpful Links

---



**Speaker Bios**



**ACS NLCRT  
Leadership Bios**



**Connect with  
us on X**



**Connect with us  
on LinkedIn**

**POSTING ONLINE?**

Use our Hashtag

**#ACSNLCRT**



NATIONAL  
LUNG CANCER  
ROUNDTABLE

# THANK YOU

TO OUR SPONSORS

*Lilly*

A MEDICINE COMPANY



MERCK

AstraZeneca 

Johnson & Johnson

REGENERON  
SCIENCE TO MEDICINE®

novocure®

abbvie

 Pfizer

Additional thanks to Agilent, Boehringer Ingelheim, Foundation Medicine, and Takeda



# About the ACS National Lung Cancer Roundtable

The American Cancer Society National Lung Cancer Roundtable (ACS NLCRT) was established in 2017. The ACS NLCRT is a national coalition of member organizations dedicated to creating lung cancer survivors. The roundtable fosters sustained partnerships across diverse sectors and communities to tackle both long-standing and emerging issues in lung cancer.

## → Priorities

- Accelerate implementation, uptake of, and adherence to early detection of lung cancer.
- Improve guideline-concordant lung cancer staging and optimize the use of biomarkers in practice.
- Promote initiatives to eliminate lung cancer-related stigma and nihilism.
- Support and strengthen state and local initiatives.
- Reduce disparities and advance health equity in lung cancer care and control.
- Advance lung cancer survivorship.

## → Health Equity Statement

ACS believes that all people should have a fair and just opportunity to prevent, find, treat, and survive lung cancer, regardless of income, skin color, sexual orientation, gender identity, disability status, or zip code.

# WEDNESDAY, MAY 13

<b>11:00 AM</b>	<b>ARRIVAL, REGISTRATION, LIGHT LUNCH &amp; NETWORKING</b>	
<b>12:00 PM</b>	<b>OPENING &amp; PURPOSE SETTING</b>	<b>Johannesburg North/South</b>
	<ul style="list-style-type: none"> <li>• <b>Ella Kazerooni, MD, MS</b> – Chair, ACS NLCRT; University of Michigan</li> </ul>	
<b>12:30 PM</b>	<b>PANEL 1: WHAT IS IMPLEMENTATION SCIENCE IN CLINICAL PRACTICE? (AND WHY IT MATTERS FOR LUNG CANCER SCREENING)</b>	<b>Johannesburg North/South</b>
	<p><b>Moderator:</b></p> <ul style="list-style-type: none"> <li>• <b>David Chambers, DPhil, MSc</b> – National Institutes of Health</li> </ul> <p><b>Panelists:</b></p> <ul style="list-style-type: none"> <li>• <b>Rachel Shelton, ScD, MPH</b> – Columbia University</li> <li>• <b>Raymond Osarogiagbon, MBBS</b> – Baptist Cancer Center</li> <li>• <b>Mary Pasquinelli, DNP, APRN, FNP-BC</b> – University of Illinois, Chicago</li> </ul>	
<b>1:30 PM</b>	<b>PANEL 2: APPLIED &amp; PRACTICAL IMPLEMENTATION SCIENCE FOR LUNG CANCER SCREENING (USING PRISM OR SIMILAR FRAMEWORK)</b>	<b>Johannesburg North/South</b>
	<p><b>Moderator:</b></p> <ul style="list-style-type: none"> <li>• <b>Wynne Norton, PhD</b> – National Cancer Institute</li> </ul> <p><b>Panelists:</b></p> <ul style="list-style-type: none"> <li>• <b>Christina Studts, PhD, MSPH, MSW</b> – University of Colorado</li> <li>• <b>Jamie Ostroff, PhD</b> – Memorial Sloan Kettering Cancer Center</li> <li>• <b>Lauren Groner, DO</b> – University of Miami</li> <li>• <b>Robert Smith, PhD</b> – American Cancer Society</li> </ul>	
<b>2:45 PM</b>	<b>NETWORKING BREAK</b>	<b>Johannesburg North/South</b>
<b>3:00 PM</b>	<b>PANEL 3: STORIES FROM THE FIELD: HOW IMPLEMENTATION SCIENCE HAS ACCELERATED LUNG CANCER SCREENING</b>	<b>Johannesburg North/South</b>
	<p><b>Moderator:</b></p> <ul style="list-style-type: none"> <li>• <b>Julie Barta, MD</b> – Thomas Jefferson University</li> </ul> <p><b>Panelists:</b></p> <ul style="list-style-type: none"> <li>• <b>Jamie Studts, PhD</b> – University of Colorado</li> <li>• <b>Katharine Rendle, PhD, MSW, MPH</b> – University of Pennsylvania</li> <li>• <b>Anne Gaglioti, MD, MS</b> – American Cancer Society</li> <li>• <b>Renda Wiener, MD, MPH</b> – VA Boston Healthcare System</li> </ul>	

4:30 PM -  
5:00PM

**DAY TWO PREVIEW**

**INTRODUCTION, STRUCTURE AND GOALS OF BREAKOUT GROUPS**

**Johannesburg  
North/South**

- **Natalie Jaynes, MPhil, Ella Kazerooni, MD, MS and Robert Smith, PhD**

**Breakout Group 1 – Centralized Lung Cancer Screening Programs**

**Johannesburg  
North**

**Subject Matter Experts:**

- **Renda Wiener, MD, MPH** - VA Boston Healthcare System
- **Jamie Studts, PhD** - University of Colorado
- **Jamie Ostroff, PhD** - Memorial Sloan Kettering Cancer Center

**ACS Facilitator** – Lauren Rosenthal, MPH

**Breakout Group 2 – Decentralized Programs Within Large Health Systems**

**Johannesburg  
South**

**Subject Matter Experts:**

- **Brendon Stiles, MD** - Montefiore Einstein Comprehensive Cancer Center
- **Mary Pasquinelli, DNP, APRN, FNP-BC** - University of Illinois, Chicago
- **Randi Williams, PhD, MPH** - Georgetown University

**ACS Facilitator** – Megan Burns, PMP

**Breakout Group 3 – Resource-Constrained / FQHC / Rural Settings**

**Copenhagen**

**Subject Matter Experts:**

- **David Chambers, DPhil, MSc** - National Institutes of Health
- **Rich Wender, MD** - University of Pennsylvania
- **Anne Gaglioti, MD, MS** - American Cancer Society

**ACS Facilitator:** Molly Black

**Breakout Group 4 – Community and Equity-Focused Models**

**Shanghai**

**Subject Matter Experts:**

- **Efrén Flores, MD** - Massachusetts General Hospital
- **Joelle Fathi, DNP, RN, ARNP** - GO2 for Lung Cancer
- **Lisa Carter-Bawa, PhD, MPH, APRN, ANP-C** - Hackensack Meridian Health

**ACS Facilitator:** Natalie Jaynes, MPhil

5:00 PM

**DAY ONE CLOSE**

- **Ella Kazerooni, MD, MS**

**Johannesburg  
North/South**

5:00 PM-  
6:30 PM

**RECEPTION**

**Vapor & Stratus  
Rooftop Lounge**

WEDNESDAY

# THURSDAY, MAY 14


		Breakout Group Rooms
7:30 AM	BREAKFAST & NETWORKING	
8:30AM - 10:00AM	BREAKOUT CYCLE 1: DEFINE THE PROBLEM & CONTEXT	
	<b>BREAKOUT GROUP 1 – JOHANNESBURG NORTH</b>	
	<b>BREAKOUT GROUP 2 – JOHANNESBURG SOUTH</b>	
	<b>BREAKOUT GROUP 3 – COPENHAGEN</b>	
	<b>BREAKOUT GROUP 4 – SHANGHAI</b>	
10:00 AM - 10:15 AM	BREAK	
10:20 AM - 11:50 AM	BREAKOUT CYCLE 2: IDENTIFY BARRIERS & SELECT STRATEGIES	
11:50 PM - 12:50 PM	NETWORKING LUNCH	
12:50 PM - 2:00 PM	BREAKOUT CYCLE 3: BUILD A DRAFT PLAN/TEMPLATE	
2:00 PM - 2:15PM	BREAK	
2:15 PM - 3:00 PM	BREAKOUT CYCLE 4: FEASIBILITY, EQUITY & NEXT STEPS	
3:00 PM- 3:20 PM	BREAK AND TRANSITION TO MAIN ROOM	
3:20 PM- 4:15 PM	<b>BREAKOUT SHARING &amp; SYNTHESIS</b> <ul style="list-style-type: none"> <li>• Moderator: David Chambers, DPhil, MSc</li> <li>• Breakout group designated presenters</li> </ul>	
4:15PM - 4:30PM	<b>CLOSING: FROM SUMMIT TO ONGOING WORK</b> <ul style="list-style-type: none"> <li>• Ella Kazerooni, MD, MS</li> </ul>	
4:30PM	SUMMIT ADJOURNS	

# KIMPTON MONACO MAP

## DAY 1 – WEDNESDAY, MAY 13

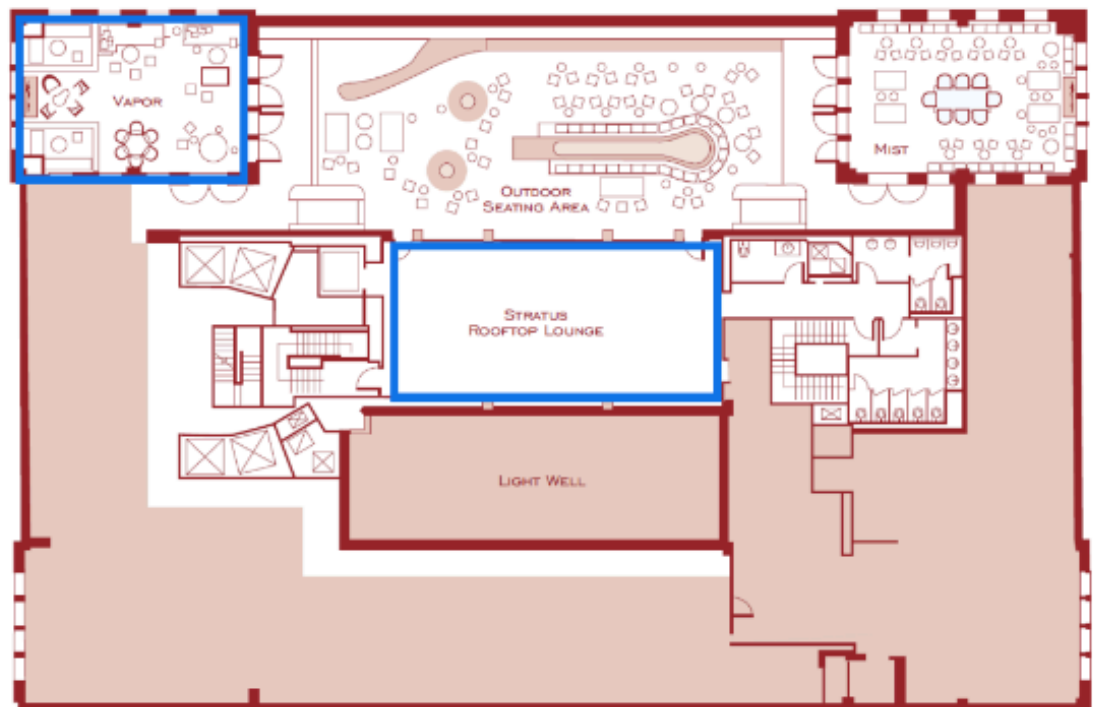
5/13:

 General Session & Lunch

 Reception



Rooftop



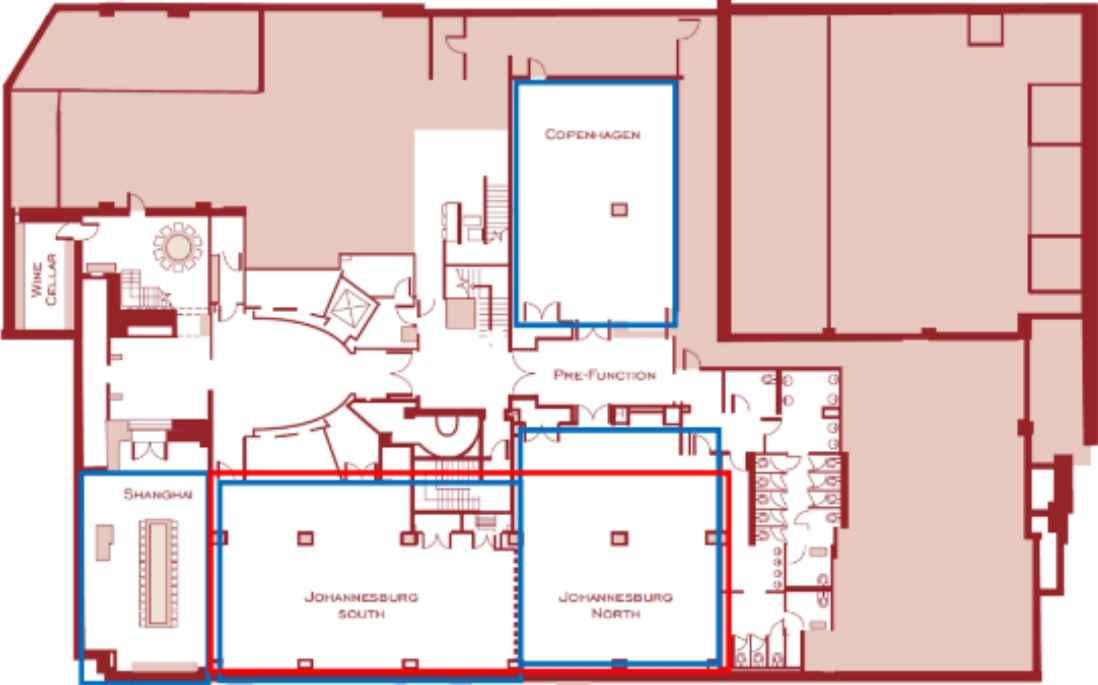
MAPS

# KIMPTON MONACO DAY 2 - THURSDAY, MAY 14

---

5/14:

- General Session
- Breakouts



MAAPS

# A NOTE OF GRATITUDE

The ACS NLCRT Team would like to thank the following planning committee members for their time, support and commitment to this work.

## Summit Planning Committee

### **Molly Black**

*American Cancer Society*

### **David Chambers, DPhil, MSc**

*National Institutes of Health*

### **Joelle Fathi, DNP, RN, ARNP, CTTS, FAAN**

*GO2 for Lung Cancer*

### **Natalie Jaynes, MPhil**

*American Cancer Society*

### **Korey Hofmann, MPH**

*American Cancer Society*

### **Ella Kazerooni, MD, MS, FACR, FACC, FSABI**

*University of Michigan  
ACS NLCRT Chair*

### **Raymond Osarogiagbon, MBBS, FACP**

*Baptist Memorial Health Care Corporation*

### **Jamie Ostroff, PhD**

*Memorial Sloan Kettering Cancer Center*

### **Lauren Rosenthal, MPH**

*American Cancer Society*

### **Robert Smith, PhD, FSBI**

*American Cancer Society  
ACS NLCRT ACS Chair*

### **Jamie Studts, PhD**

*University of Colorado*

### **Carey Thomson, MD, MPH, ATSF, FCCP**

*Mt. Auburn Hospital / Beth Israel Lahey  
Health*

### **Renda Wiener, MD, MPH, ATSF**

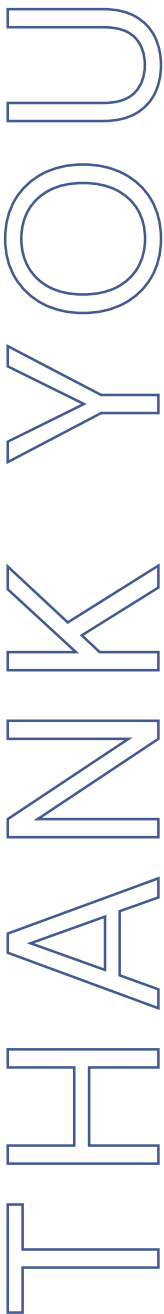
*VA Boston Healthcare System*

### **Randi Williams, PhD, MPH**

*Georgetown University Medical Center*

### **Douglas Wood, MD, FACS, FRCSEd**

*University of Washington  
ACS NLCRT Vice Chair*



# A NOTE OF GRATITUDE (CONT.)

The ACS NLCRT Team would like to thank the following experts for their time, support and commitment to this work.

## Breakout Group Subject Matter Experts

**Jamie Studts, PhD,**  
*University of Colorado*

**Jamie Ostroff, PhD**  
*Memorial Sloan Kettering Cancer Center*

**Lisa Carter-Bawa, PhD, MPH, APRN, ANP-C, FAAN, FSBM**  
*Hackensack Meridian Health*

**Mary Pasquinelli, DNP, APRN, FNP-BC**  
*University of Illinois, Chicago*

**David Chambers, DPhil, MSc**  
*National Institutes of Health*

**Brendon Stiles, MD, FACS**  
*Montefiore Einstein Comprehensive Cancer Center*

**Joelle Fathi, DNP, RN, ARNP, CTTS, FAAN, FAANP**  
*GO2 for Lung Cancer*

**Richard Wender, MD**  
*University of Pennsylvania*

**Efrén Flores, MD, FACR**  
*Massachusetts General Hospital*

**Renda Wiener, MD, MPH, ATSF**  
*VA Boston Healthcare System*

**Anne Gaglioti, MD, MS, FAAFP**  
*American Cancer Society*

**Randi Williams, PhD, MPH**  
*Georgetown University Medical Center*

THANK YOU

# A NOTE OF GRATITUDE (CONT.)

The ACS NLCRT Team would like to thank the following experts for their time, support and commitment to this work.

## **Moderators and Panelists**

**Julie Barta, MD, ATSF**

*Thomas Jefferson University*

**Mary Pasquinelli, DNP, APRN, FNP-BC**

*University of Illinois, Chicago*

**David Chambers, DPhil, MSc**

*National Institutes of Health*

**Katharine Rendle, PhD, MSW, MPH**

*University of Pennsylvania*

**Anne Gaglioti, MD, MS, FAAFP**

*American Cancer Society*

**Rachel Shelton, ScD, MPH**

*Columbia University*

**Lauren Groner, DO**

*University of Miami*

**Robert Smith, PhD, FSBI**

*American Cancer Society*

**Wynne Norton, PhD**

*National Cancer Institute*

**Christina Studts, PhD, MSPH, MSW**

*University of Colorado*

**Raymond Osarogiagbon, MBBS**

*Baptist Memorial Health Care Corporation*

**Jamie Studts, PhD**

*University of Colorado*

**Jamie Ostroff, PhD**

*Memorial Sloan Kettering Cancer Center*

**Renda Wiener, MD, MPH**

*VA Boston Healthcare System*

THANK YOU



# ROUNDTABLE STAFF

---



**Lauren S. Rosenthal, MPH**  
Strategic Director, ACS NLCRT



**Megan Burns, PMP**  
Director, Roundtable Program Management



**Natalie Jaynes, MPhil**  
Director of Facilitation and Strategic Planning



**Korey Hofmann, MPH**  
Program Manager, Roundtables

STAFF





