

# CAMPAIGN TO END LUNG CANCER STIGMA



NATIONAL  
LUNG CANCER  
ROUNDTABLE

Hosted by the  
American Cancer Society  
National Lung Cancer Roundtable

Loews Chicago O'Hare  
Rosemont, Illinois

**2023 Summit**  
**April 13-14, 2023**

# Welcome to the American Cancer Society

Dear Summit Participants,

Welcome to the American Cancer Society National Lung Cancer Roundtable's (ACS NLCRT) Third Summit for ***The Campaign to End Lung Cancer Stigma***. We hope your travels to Chicago were smooth, and that you come ready to roll up your sleeves and work together over the next day and a half as we continue developing a comprehensive strategic plan with actionable recommendations. Our ultimate goal is to eliminate the experience of stigma for individuals affected by lung cancer. This week's work is a critical step in that process where we will again focus on messaging by learning about a range of programs that have addressed lung cancer stigma and developing and refining messages that can be used to prevent and mitigate stigma as a barrier to optimal care and support for the lung cancer community.

This summit is a follow-up to the February 2020 in-person meeting in Atlanta and the virtual meeting in October 2021, both of which many of you attended. Recognizing the importance of how language, phrasing, and imagery that is person-first, judgment-free, and non-stigmatizing are important components of creating a more supportive and empathic environment to reduce the burden of lung cancer, the 2020 summit attendees developed essential themes to guide message development and imagery design. Drawing on the diverse expertise of over 70 members of the lung cancer community, the outcomes included three key themes to end lung cancer stigma: (1) urgency, (2) empathy, and (3) optimism.

We are anxious to share details and collaborate with local, regional, and national organizations to promote initiatives to eliminate the pervasive stigma and nihilism associated with lung cancer. *The Campaign to End Lung Cancer Stigma* (of which this Summit is an integral part) is one of three key strategies under the ACS NLCRT to reduce the burden of lung cancer and create lung cancer survivors. The ACS NLCRT also focuses on *accelerating the implementation, uptake, and adherence of lung cancer screening and nodule detection and management* and *improving guideline-concordant staging and optimizing the use of biomarkers in practice*, both strategies with multiple on-going projects. Taken together, these three strategies span the lung cancer continuum and the comprehensive way in which these issues are addressed. You can learn more about these NLCRT projects on page 10.

# National Lung Cancer Roundtable

We remain grateful to the American Cancer Society and our partners, who make this critical work possible. The American College of Radiology, Amgen, AstraZeneca, Bristol Myers Squibb, Daiichi-Sankyo, Foundation Medicine, Genentech, Guardant Health, Janssen Pharmaceuticals, Merck, Novartis, Novocure, Regeneron, Sanofi, and Takeda all share the conviction that we can best make a difference in the lives of individuals affected by lung cancer when we come together, bringing our unique strengths and perspectives to find solutions to complex problems. It is that belief that embodies the mission of the Roundtable.



ONCOLOGY



Daiichi-Sankyo



NOVARTIS



Additional thanks to Foundation Medicine, Guardant Health, and Novocure

We are here this week with a continued sense of urgency to address lung cancer stigma and nihilism, grounded in empathy for those who experience its effects and the optimism that we can leverage advances in risk reduction, early detection, treatment, survivorship, and palliative care to end lung cancer stigma as a toxic barrier that adversely impacts our community. Thank you for being an important part of this effort this week and into the future.

With gratitude,

**Jamie Studts, PhD**

Chair, Campaign to End Lung Cancer Stigma  
Professor, Division of Medical Oncology,  
Department of Medicine  
University of Colorado School of Medicine

**Lisa Carter-Bawa, PhD, APRN, ANP-C**

Co-Chair, Campaign to End Lung Cancer Stigma  
Director, Cancer Prevention Precision Control Institute  
Center for Discovery & Innovation  
Hackensack Meridian Health

# Meeting Agenda

Meals and general sessions will take place in the Louvre Ballroom

## DAY ONE, APRIL 13, 2023

---

**1:00 PM – 1:30 PM**

### **Welcome and Overview**

**Jamie Studts PhD**

Chair, Campaign to End Lung Cancer Stigma  
Professor, Division of Medical Oncology, Department of Medicine  
University of Colorado School of Medicine

---

**1:30 PM – 2:30 PM**

### **Opening Panel: Insights into the Lived Experience of Lung Cancer Stigma**

#### **Moderators**

**Eugene Manley, Jr, PhD**

Director, STEM Workforce Initiatives  
LUNgevity Foundation

**Elizabeth Scharnetzki, PhD**

Staff Scientist, Maine Health Institute for Research  
Center for Interdisciplinary Population and Health Research

#### **Panelists**

**Natalie Brown**

Patient Advocate  
LUNgevity Foundation

**James Pantelas**

Patient Advocate  
GO2 Foundation for Lung Cancer  
Department of Veterans Health

**Teresa Conneran**

Patient Advocate  
Founder, KRAS Kickers

**Juanita Segura**

Patient Advocate  
Lung Cancer Foundation of America

---

**2:30 PM – 3:20 PM**

### **Keynote #1 – The Health Stigma and Discrimination Framework: Overview and Applications to Lung Cancer Stigma**

**Anne Stangl, PhD, MPH**

Senior Advisor, Elimination of Stigma and Discrimination  
Division of Global HIV and Tuberculosis  
Centers for Disease Control and Prevention

#### **Question & Answer**

---

---

**3:20 PM – 3:40 PM**  
**Break**

---

**3:40 PM – 4:30 PM**  
**NCI Global Stigma Workshop: Federal Partners & Future Opportunities**

**Vidya Vedham, PhD**  
Program Director, Center for Global Health  
National Cancer Institute

**Question & Answer**

---

**4:30 PM – 5:30 PM**  
**Breakout Groups #1: Lung Cancer Messaging Across the Socioecological Spectrum**

**Jamie Studts, PhD**  
Chair, Campaign to End Lung Cancer Stigma  
Professor, Division of Medical Oncology, Department of Medicine  
University of Colorado School of Medicine

**Lauren Rosenthal, MPH**  
Strategic Director  
ACS National Lung Cancer Roundtable

**Community/Advocacy Opportunities (Bode Room)**

**Dusty Donaldson**  
Patient Advocate  
LungCAN, Dusty Joy Foundation

**Eugene Manley, PhD**  
Director, STEM Workforce Initiatives  
LUNGeivity Foundation

**Elizabeth Scharnetzki, PhD**  
Staff Scientist, Maine Health Institute for Research  
Center for Interdisciplinary Population and Health Research

**Clinical Opportunities (Gallery 624)**

**Abbie Begnaud, MD**  
Associate Professor, Division of Pulmonary, Allergy,  
Critical Care and Sleep Medicine  
University of Minnesota

**Lisa Carter-Bawa, PhD, APRN, ANP-C**  
Co-Chair, Campaign to End Lung Cancer Stigma  
Director, Cancer Prevention Precision Control Institute  
Center for Discovery & Innovation  
Hackensack Meridian Health

**Global Opportunities (Gallery 524)**

**Jamie Ostroff, PhD**  
Chief, Behavioral Sciences Service  
Memorial Sloan Kettering Cancer Center

**Maureen Rigney, LICSW**  
Senior Director, Support Initiatives  
GO2 for Lung Cancer

**Vidya Vedham, PhD**  
Program Director, Center for Global Health  
National Cancer Institute

**Research Opportunities (Gallery 724)**

**Jill Feldman**  
Patient Advocate  
EGFR Resisters

**Jamie Studts, PhD**  
Chair, Campaign to End Lung Cancer Stigma  
Professor, Division of Medical Oncology,  
Department of Medicine  
University of Colorado School of Medicine

---

**5:30 PM**  
**Wrap-up**

---

**5:35 PM – 6:30 PM**  
**Reception & Networking**

---

# DAY TWO: APRIL 14, 2023

---

**7:00 AM – 8:00 AM**

## **Breakfast & Networking**

---

**8:00 AM – 8:15 AM**

## **Opening Comments – Launching Day #2: The Messaging Summit**

**Lisa Carter-Bawa, PhD, APRN, ANP-C**

Co-Chair, Campaign to End Lung Cancer Stigma  
Director, Cancer Prevention Precision Control Institute  
Center for Discovery & Innovation  
Hackensack Meridian Health

---

**8:15 AM – 9:15 AM**

## **Breakout Groups #1 Report Out**

**Lisa Carter-Bawa, PhD, APRN, ANP-C**

Co-Chair, Campaign to End Lung Cancer Stigma  
Director, Cancer Prevention Precision Control Institute  
Center for Discovery & Innovation @ Hackensack Meridian Health

### **Community/Advocacy Opportunities**

Ms. Donaldson, Dr. Manley & Dr. Scharnetzki

### **Research Opportunities**

Ms. Feldman & Dr. Studts

### **Clinical Opportunities**

Dr. Begnaud & Dr. Carter-Bawa

### **Global Opportunities**

Dr. Ostroff, Ms. Rigney & Dr. Vedham

---

**9:15 AM – 10:15 AM**

## **ACS NLCRT and Campaign to End Lung Cancer Stigma Updates**

**Lauren Rosenthal, MPH**

Strategic Director  
ACS National Lung Cancer Roundtable

### **NLCRT Updates**

**Ella Kazerooni, MD, MS**

Chair, ACS National Lung Cancer Roundtable  
Professor, Department of Radiology  
University of Michigan

### **Campaign Update – Empathic Communication**

**Jamie Ostroff, PhD**

Chief, Behavioral Sciences Service  
Memorial Sloan Kettering Cancer Center

### **Campaign Update – Lung Cancer Stigma Biopsy**

**Jamie Studts, PhD**

Professor, Division of Medical Oncology, Department of Medicine  
University of Colorado School of Medicine

## **Open Discussion and Ideas**

---

---

**10:15 AM – 10:30 AM**  
**Break**

---

**10:30 AM – 11:20 AM**  
**Keynote #2 – The Wrong Question Campaign**

**Jamie Studts, PhD (on behalf of Lung Cancer Canada)**  
Professor, Division of Medical Oncology, Department of Medicine  
University of Colorado School of Medicine

**Question and Answer**

---

**11:20 AM – 12:10 PM**  
**Lung Cancer–Related Media Campaigns: Language, Imagery, and Contexts**

**Deborah Brown, MS, CHES**  
Chief Mission Office  
American Lung Association  
*Saved by the Scan*

**Julie Reynolds, MBA**  
Marketing Manager, Targeted Therapies  
Genentech  
*Screen Your Lungs*

**Eugene Manley, Jr, PhD**  
Director, STEM Workforce Initiatives  
LUNGeivity Foundation

**AND**

**Elizabeth Scharnetzki, PhD**  
Staff Scientist, Maine Health Institute for Research  
Center for Interdisciplinary Population and Health Research  
*Community Inclusion in Developing Language Guidelines*

---

**12:10 PM – 1:00 PM**  
**Lunch & Networking**

---

## 1:00 PM – 2:00 PM

### Breakout Groups #2: Exploring Potential Messaging Across the Lung Cancer Continuum

#### Risk Reduction (Bode Room)

**Joelle Fathi, DNP, RN, ARNP**  
Chief Healthcare Delivery Officer  
GO2 for Lung Cancer

#### Elyse Park, PhD, MPH

Professor, Department of Psychiatry & Medicine  
Massachusetts General Hospital  
Harvard Medical School

#### Diagnostics & Treatment (Gallery 624)

**Abbie Begnaud, MD**  
Associate Professor, Division of Pulmonary,  
Allergy,  
Critical Care and Sleep Medicine  
University of Minnesota

#### Ella Kazerooni, MD, MS

Chair, ACS National Lung Cancer Roundtable  
Professor, Department of Radiology  
University of Michigan

#### Early Detection (Gallery 524)

**M. Patricia Rivera, MD**  
Associate Director of Diversity, Equity, and Inclusion  
University of Rochester Medical Center

#### Jamie Studts, PhD

Chair, Campaign to End Lung Cancer Stigma  
Professor, Division of Medical Oncology  
Department of Medicine  
University of Colorado School of Medicine

#### Survivorship & Palliative Care (Gallery 724)

**James Pantelas**  
Patient Advocate  
GO2 Foundation for Lung Cancer  
Department of Veterans Health

#### Cardinale Smith, MD, PhD

Professor, Department of Hematology and  
Medical Oncology  
Icahn School of Medicine at Mount Sinai

---

## 2:00 PM – 2:45 PM

### Breakout Groups #2 Report Out

#### Jamie Studts, PhD

Chair, Campaign to End Lung Cancer Stigma  
Professor, Division of Medical Oncology, Department of Medicine  
University of Colorado School of Medicine

#### Risk Reduction

Dr. Fathi & Dr. Park

#### Early Detection

Dr. Rivera & Dr. Studts

#### Diagnosis & Treatment

Dr. Begnaud & Dr. Kazerooni

#### Survivorship & Palliative Care

Mr. Pantelas & Dr. Smith

---

## 2:45 PM – 3:00 PM

### Wrap-up and Next Steps

#### Lisa Carter-Bawa, PhD, APRN, ANP-C

Co-Chair, Campaign to End Lung Cancer Stigma  
Director, Cancer Prevention Precision Control  
Institute  
Center for Discovery & Innovation  
Hackensack Meridian Health

#### Lauren Rosenthal, MPH

Strategic Director  
ACS National Lung Cancer Roundtable

#### Ella Kazerooni, MD, MS

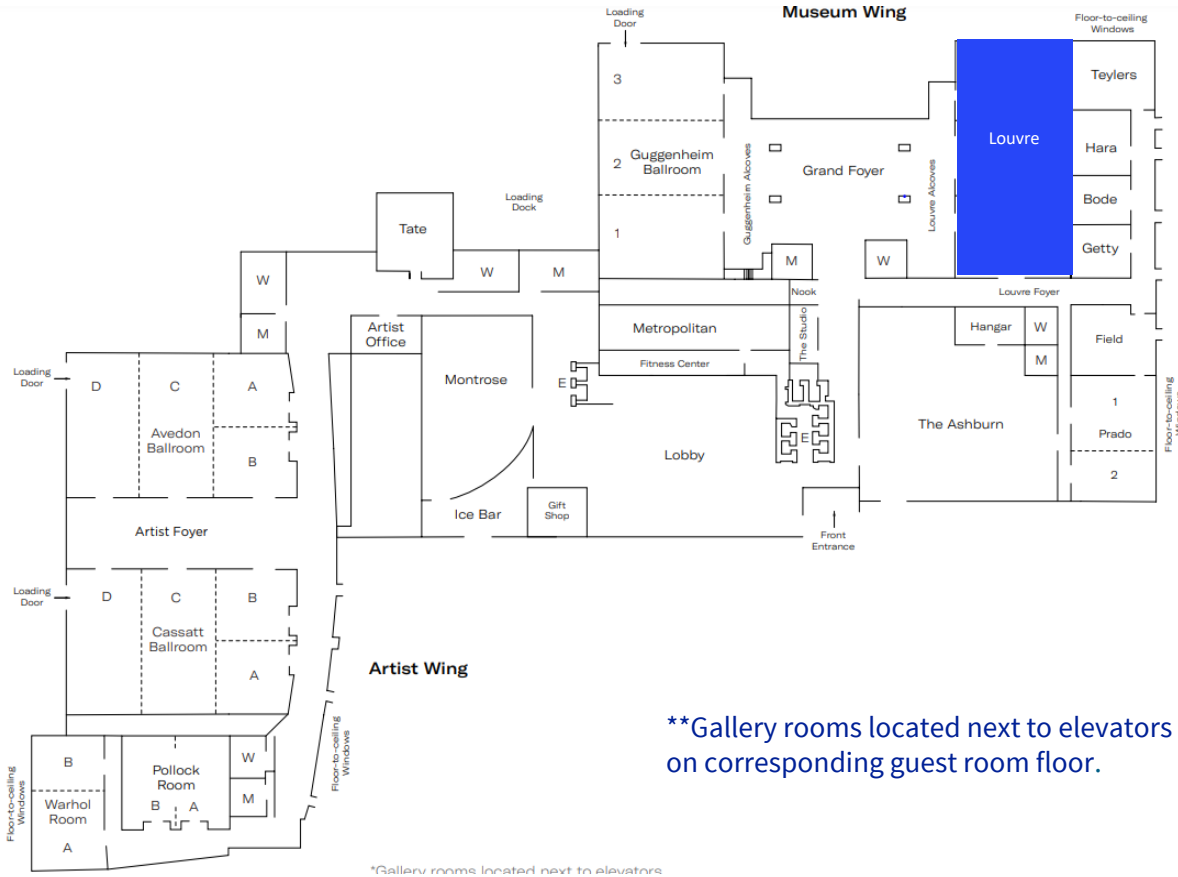
Chair, ACS National Lung Cancer Roundtable  
Professor, Department of Radiology  
University of Michigan

#### Jamie Studts, PhD

Chair, Campaign to End Lung Cancer Stigma  
Professor, Division of Medical Oncology, Department  
of Medicine  
University of Colorado School of Medicine



# Loews O'Hare Meeting Floorplan



## Breakout Group Rooms:

- |             |  |   |
|-------------|--|---|
| Bode        | <span style="color: teal;">●</span> Community/Advocacy Opportunities | <span style="color: orange;">●</span> Risk Reduction              |
| Gallery 524 | <span style="color: red;">●</span> Research Opportunities            | <span style="color: yellow;">●</span> Early Detection             |
| Gallery 624 | <span style="color: blue;">●</span> Clinical Opportunities           | <span style="color: purple;">●</span> Diagnosis/Treatment         |
| Gallery 724 | <span style="color: magenta;">●</span> Global Opportunities          | <span style="color: green;">●</span> Survivorship/Palliative Care |

# About the ACS National Lung Cancer Roundtable

The American Cancer Society (ACS) exists to improve lives. We are the only organization that integrates discovery, advocacy, and direct patient support to measurably improve those lives. Our discovery research leads to breakthroughs in preventing, detecting, and treating cancer. Our advocacy work removes barriers to care so people in every community can have an opportunity to access those breakthroughs. Through direct patient support, we connect people in every community with essential programs and support services throughout their cancer journey. While cancer affects everyone, it doesn't affect everyone equally. Through our commitment to these areas of focus, we are working to ensure everyone has a fair and just opportunity to prevent, detect, treat, and survive cancer.

Since its inception in 2017, the ACS National Lung Cancer Roundtable (ACS NLCRT) has taken on the ACS's mission of improving the lives of cancer patients and their families through a focus on creating lung cancer survivors. The NLCRT has galvanized 202 member organizations and over 220 leading experts, as well as patient and caregiver advocate representatives, at the national, state, and local levels, to collectively partner in multidisciplinary, problem-solving collaborations, catalyze action to create, build, and strengthen innovative solutions, and develop and disseminate evidence-based interventions and best practices.

The NLCRT was recommended by the recent [President's Cancer Panel Report](#) as a priority cancer control model that effectively harnesses the collective power and expertise of the entire lung cancer community to close gaps in cancer screening by connecting people, communities, and systems to improve equity and access. In addition to its campaign to end lung cancer stigma, through this approach, the ACS NLCRT stimulates multidisciplinary collaborations to reduce lung cancer mortality through actions aligned to several other priorities:

- Accelerate implementation, uptake, and adherence of lung cancer screening and nodule detection and management
- Promote guideline-concordant staging and optimize the use of biomarker testing to guide appropriate and timely therapy and care
- Strengthen state-based initiatives based on the belief that individual states or regions know the needs of their population, and therefore are best positioned to tailor broad recommendations and best practices to fit the cultures and needs of the communities represented in their area.

Addressing health equity, as it is integral to increasing the number of lung cancer survivors, through initiatives that target health disparities and equity, is critical to our work. Taken together with the strategic priorities that span the lung cancer care and control continuum, the ACS NLCRT has developed a comprehensive way in which these issues are addressed through a collaborative and collective coalition of members.



In July 2022, the ACS NLCRT convened the inaugural Summit: **Accelerating Uptake of Lung Cancer Screening – A National Initiative** to develop the foundation for a comprehensive strategic plan with actionable recommendations to accelerate uptake of screening. Select ACS NLCRT activities that currently advance this priority are detailed below with additional activities in progress

**LungPLAN™.** LungPLAN is a free financial planning tool that helps healthcare professionals, financial experts, and administrators model implementation costs and outcomes to demonstrate downstream value of a lung cancer early detection program (screening and nodule detection and management), thereby ensuring these programs are successful and tailored to their patient population. It can be used to build new lung cancer early detection programs, as well as strengthen and expand existing programs for different types of facilities. LungPLAN was created by a team of NLCRT clinical, navigation, health systems, and financial experts, and was field-tested by health systems and provides a framework for predicting lung cancer screening and nodule management program costs, resources, staffing, volume, and revenue. It is based on current evidence including data from the American College of Radiology [Lung CT Screening Reporting & Data System](#) (LUNG-RADS) and the [Lung Cancer Screening Registry](#).

**State Based Initiative (SBI) Planning Tool.** Building and strengthening local initiatives led by a multidisciplinary team of partners is a critical strategy for reducing lung cancer mortality. Our goals in creating this tool were to create a formula to help build initiatives and coalitions that could be tailored to the unique needs of each state and encourage common goals with the understanding that approaches will depend on existing initiatives, resources, and partner engagement.

# Roundtable and Its Strategic Priorities

The web- and PDF-based SBI Planning Tool is an easy-to-follow roadmap for building these efforts and can be tailored to each user regardless of their experience with coalitions or lung cancer expertise. It provides for flexible navigation, allowing users to explore approaches to identify partners, priorities, goals, and strategies that ensure alignment in focus and direction. It shares field-tested strategies to overcome common obstacles and provides worksheets and useful references. Its intended audience is wide-ranging – from clinicians, health systems, public health partners, and advocacy organizations who want to work together to leverage collective action to improve lung cancer risk reduction, early detection, and care services across the nation.

**Webinar and Podcast Series.** In partnership with the American College of Radiology (ACR), the ACS NLCRT hosts an annual webinar and podcast series addressing the challenges and opportunities around lung cancer screening.

The 2022 theme, “[Lung Cancer Screening 201: Accelerating Screening Uptake](#),” is the third of the series. It highlights established screening programs and showcases methods and metrics health centers and hospital systems can use to accelerate lung cancer screening uptake and adherence. The nationally-promoted webinar series features perspectives from key partner groups – primary care physicians, pulmonologists, radiologists, thoracic surgeons, medical oncologists, epidemiologists. Episodes are available to download on the NLCRT.org website.

[Pleural Space | Conversations in Lung Cancer](#) is our podcast channel that features conversations about every aspect of lung cancer and hope for the future. With 2050+ downloads currently, we are excited about the third series, “**Lung Cancer Screening 201: Expanding Horizons**,” which launched in November 2022 during Lung Cancer Awareness Month.



Despite an unprecedented acceleration of new treatment options for NSCLC that target specific biomarkers, many patients face multiple, cascading challenges for receiving comprehensive biomarker testing. In fact, many cancer treatment facilities, particularly in community practice settings (and in rural communities), where most cancer patients are treated), are limited in their ability to offer biomarker testing.

The NLCRT’s second priority, **Optimizing Lung Cancer Biomarkers in Practice – A National Initiative**, seeks to address provider, patient, and systems barriers and issues that prevent all eligible patients from receiving care that is in keeping with best practices.

Focused work began with a 2020 virtual Summit that brought together a multidisciplinary team of experts to determine the primary challenges to optimizing comprehensive biomarker testing. NLCRT activities that were initiated in response to the Summit’s recommendations include:

**Comprehensive Biomarker Testing Consensus Statement.** Identifies common and dissimilar elements of the leading comprehensive biomarker testing clinical practice guidelines and explores the potential to harmonize and modernize the guidelines established by professional societies to create a multi-society professionally-engaged and -endorsed best practice statement on comprehensive biomarker testing in lung cancer.

**Acquiring Tissue for Lung Cancer Diagnosis and Comprehensive Biomarker Testing.** Multi-disciplinary educational and practical procedure-specific resource that focuses on what successful incorporation of comprehensive biomarker testing looks like in the healthcare setting and what it looks like when the process is interrupted and disjointed.

**Process Map and Assessment Tools to Reduce Biomarker Testing Turnaround Time.** Identifies key factors that prolong biomarker testing turnaround time, proposes strategies to reduce it, and presents a process map to aid clinicians and key organizational partners in improving testing efficiency.

**Addressing Lung Cancer Biomarker Testing Through Project ECHO™.** The ACS NLCRT, ACS, and state-based partners are utilizing the ECHO Model to improve biomarker testing and cancer outcomes, increase health equity, and address the needs of the most vulnerable populations by equipping hospital systems and clinicians with the right knowledge, at the right place, at the right time.

In 2021, a 3-state pilot in Georgia, Mississippi, and Kentucky was launched. The evaluation and success of this pilot resulted in an 8-state expansion that subsequently launched in September 2022. The NLCRT’s goal is to expand to the remaining 39 states and Puerto Rico expeditiously due to the rapid pace of discovery of driver mutations and novel therapies.

In October 2022, the NLCRT hosted a follow-up Summit, during which accomplishments from the inaugural Summit were shared, NLCRT members highlighted ways in which partnerships can improve access to biomarker testing and create better outcomes, and workflow perspectives detailed key barriers and ways to overcome them.

# Stigma Summit Roster

**Jennifer Aversano, MSN, RN, OCN, ONN-CG**  
Northwest Community Hospital/Cancer Services  
[javersano@nch.org](mailto:javersano@nch.org)

**Abbie Begnaud, MD**  
University of Minnesota  
[abegnaud@umn.edu](mailto:abegnaud@umn.edu)

**Natalie Brown**  
Lung Cancer Awareness Foundation  
[nataliebrown05@yahoo.com](mailto:nataliebrown05@yahoo.com)

**Deborah Brown, MS, CHES**  
American Lung Association  
[deb.brown@lung.org](mailto:deb.brown@lung.org)

**Melissa Buffalo, MS**  
American Indian Cancer Foundation  
[mbuffalo@americanindiancancer.org](mailto:mbuffalo@americanindiancancer.org)

**Kenly Burn**  
ACS National Lung Cancer Roundtable  
[kenly.burn@cancer.org](mailto:kenly.burn@cancer.org)

**Hannah Burson**  
ACS National Lung Cancer Roundtable  
[hannah.burson@cancer.org](mailto:hannah.burson@cancer.org)

**Lisa Carter-Bawa, PhD, APRN, ANP-C**  
Center for Discovery & Innovation  
Hackensack Meridian Health  
[lisa.carterbawa@hnh-cdi.org](mailto:lisa.carterbawa@hnh-cdi.org)

**Teresa Conneran**  
KRAS Kickers  
[Terri@KRASKickers.org](mailto:Terri@KRASKickers.org)

**Deena Cook**  
Life and Breath  
[rogerdeena@comcast.net](mailto:rogerdeena@comcast.net)

**Mary Crawford**  
Genentech  
[crawford.mary@gene.com](mailto:crawford.mary@gene.com)

**Lisa Cruz**  
Takeda Oncology  
[lisa.cruz@takeda.com](mailto:lisa.cruz@takeda.com)

**Christine Cushing**  
ACS Cancer Action Network  
[christy.cushing@cancer.org](mailto:christy.cushing@cancer.org)

**Gissoo DeCotiis, MBA**  
Daiichi Sankyo, Inc.  
[gdecotiis@dsi.com](mailto:gdecotiis@dsi.com)

**Dusty Donaldson**  
Lung Cancer Action Network  
[dusty@dustyjoy.org](mailto:dusty@dustyjoy.org)

**Linda Dowling, RN**  
Lung Screening Network  
[linda\\_dowling@icloud.com](mailto:linda_dowling@icloud.com)

**Nicholas Faris, MDiv**  
Baptist Cancer Center  
[nick.faris@bmhcc.org](mailto:nick.faris@bmhcc.org)

**Joelle Fathi, DNP, RN, ARNP**  
GO2 for Lung Cancer  
[jfathi@go2.org](mailto:jfathi@go2.org)

**Jill Feldman, MA**  
EGFR Resisters  
[jfeldman4@sbcglobal.net](mailto:jfeldman4@sbcglobal.net)

**Ellen Friend**  
Merck & Co  
[ellen\\_friend@merck.com](mailto:ellen_friend@merck.com)

**Jane Gerndt, MPH**  
American Cancer Society  
[jane.gerndt@cancer.org](mailto:jane.gerndt@cancer.org)

**Lisa Giuroiu**  
Amgen  
[lgiuroiu@amgen.com](mailto:lgiuroiu@amgen.com)

**Kathleen Goss, PhD**  
American Cancer Society  
[kathleen.goss@cancer.org](mailto:kathleen.goss@cancer.org)

**Lisa Gray**  
Genentech  
[gray.lisa@gene.com](mailto:gray.lisa@gene.com)

**Travis Harper**  
Catch it in Time  
[travis@catchitintime.org](mailto:travis@catchitintime.org)

**Margaret Harrison, MA**  
Genentech  
[harrison.margaret@gene.com](mailto:harrison.margaret@gene.com)

**Elton Hedden**  
Philips North America  
[Elton.hedden@philips.com](mailto:Elton.hedden@philips.com)

**Kathleen Hill, MSHC**  
Genentech  
[hill.kathleen@gene.com](mailto:hill.kathleen@gene.com)

**Korey Hofmann, MPH**  
ACS National Lung Cancer Roundtable  
[korey.hofmann@cancer.org](mailto:korey.hofmann@cancer.org)

**Ella Kazerooni, MD, MS**  
Chair, ACS NLCRT  
University of Michigan  
[ellakaz@umich.edu](mailto:ellakaz@umich.edu)

**Justin Kelly, BSN, RN**  
Novocure Inc.  
[jkelly@novocure.com](mailto:jkelly@novocure.com)

**Olivia Klein**  
Ohlander Consulting Services  
[oliviaklein@gmail.com](mailto:oliviaklein@gmail.com)

**Ann Lally, RN**  
Rush University Medical Center  
[ann\\_m\\_lally@rush.edu](mailto:ann_m_lally@rush.edu)

**David LeDuc**  
AstraZeneca  
[david.leduc@astrazeneca.com](mailto:david.leduc@astrazeneca.com)

**Sara Lindsey-Patton**  
IASLC  
[sara.lindsey@iaslc.org](mailto:sara.lindsey@iaslc.org)

**Karl Lobo, MBA**  
Janssen Pharmaceuticals  
[klobo1@its.jnj.com](mailto:klobo1@its.jnj.com)

**Eugene Manley, Jr., PhD**  
LUNgevity Foundation  
[emanley@lungevity.org](mailto:emanley@lungevity.org)

**Martha Menchaca, MD, PhD**  
University of Illinois  
[mmench1@uic.edu](mailto:mmench1@uic.edu)

**Sabrina Moffat, RN**  
Advocate Health  
[sabrina.moffat@aah.org](mailto:sabrina.moffat@aah.org)

**Lorena Nordstrom**  
Advocate Aurora  
[lorena.nordstrom@aah.org](mailto:lorena.nordstrom@aah.org)

**Kerstin Ohlander, MS, MPH**  
Ohlander Consulting Services  
[kohlander@ocscsconsult.com](mailto:kohlander@ocscsconsult.com)

**Jamie Ostroff, PhD**  
Memorial Sloan Kettering Cancer Center  
[ostroffj@mskcc.org](mailto:ostroffj@mskcc.org)

**James Pantelas**  
Veterans Administration  
University of Michigan  
[jpantelas@icloud.com](mailto:jpantelas@icloud.com)

**Elyse Park, PhD, MPH**  
Mass General Hospital  
[epark@mgh.harvard.edu](mailto:epark@mgh.harvard.edu)

**Julie Reynolds, MBA**  
Genentech  
[reynolds.julie@gene.com](mailto:reynolds.julie@gene.com)

**Maureen Rigney, MSW**  
GO2 for Lung Cancer  
[mrigney@go2.org](mailto:mrigney@go2.org)

**M. Patricia Rivera, MD**  
University of Rochester  
[patricia\\_rivera@urmc.rochester.edu](mailto:patricia_rivera@urmc.rochester.edu)

**Elizabeth Rohan, PhD, MSW**  
Centers for Disease Control and  
Prevention  
[erohan@cdc.gov](mailto:erohan@cdc.gov)

**Lauren Rosenthal, MPH**  
ACS National Lung Cancer Roundtable  
[lauren.rosenthal@cancer.org](mailto:lauren.rosenthal@cancer.org)

**Maryam Sabit**  
American Lung Cancer Screening Initiative  
[maryamsabit73@gmail.com](mailto:maryamsabit73@gmail.com)

**Elizabeth Scharnetzki, PhD**  
Maine Lung Cancer Coalition  
[elizabeth.scharnetzki@mainehealth.org](mailto:elizabeth.scharnetzki@mainehealth.org)

**Juanita Segura**  
Lung Cancer Foundation of America  
[juanitasegura@comcast.net](mailto:juanitasegura@comcast.net)

**Sarah Shafir, MPH**  
American Cancer Society  
[Sarah.Shafir@cancer.org](mailto:Sarah.Shafir@cancer.org)

**Keith Singer**  
Catch It In Time  
[ksinger@catchitintime.org](mailto:ksinger@catchitintime.org)

**Cardinale Smith, MD, PhD**  
Icahn School of Medicine at Mount Sinai  
[cardinale.smith@mssm.edu](mailto:cardinale.smith@mssm.edu)

**Rachel Solomon**  
Sanofi  
[Rachel.Solomon@sanofi.com](mailto:Rachel.Solomon@sanofi.com)

**Anne Stangl, PhD, MPH**  
Centers for Disease Control and  
Prevention  
[atd9@cdc.gov](mailto:atd9@cdc.gov)

**Jody Steinhardt, MPH, CHES**  
NYC Health + Hospital  
[steinhaj1@nychhc.org](mailto:steinhaj1@nychhc.org)

**Jamie Studts, PhD**  
University of Colorado Cancer Center  
[jamie.studts@cuanschutz.edu](mailto:jamie.studts@cuanschutz.edu)

**Brenna VanFrank, MD, MSPH**  
Centers for Disease Control and  
Prevention  
[ydj5@cdc.gov](mailto:ydj5@cdc.gov)

**Vidya Vedham, PhD**  
National Cancer Institute  
[vidya.vedham@nih.gov](mailto:vidya.vedham@nih.gov)

**Nicole Villaluz**  
American Indian Cancer Foundation  
[cvillaluz@aicaf.org](mailto:cvillaluz@aicaf.org)

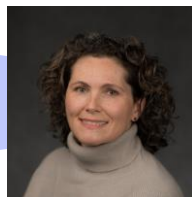
**Helen Vislosky**  
Philips Healthcare  
[michelle.vislosky@philips.com](mailto:michelle.vislosky@philips.com)

**Erica Warner, ScD, MPH**  
Massachusetts General Hospital  
[ewarner@mgh.harvard.edu](mailto:ewarner@mgh.harvard.edu)

**Denise Wojcik, RN, BSN**  
Northwestern Memorial Hospital  
[Denise.wojcik@nm.org](mailto:Denise.wojcik@nm.org)



# Speaker and Facilitator Biosketches



**Abbie Begnaud, MD, FCCP**

Abbie Begnaud is an interventional pulmonologist with a passion for lung cancer. She oversees the University of Minnesota Health Lung Cancer Screening Program and is an Associate Professor at the University of Minnesota Medical School. Her research focuses on lung cancer screening implementation, including improving access to this potentially life-saving test. She is a board member of A Breath of Hope Lung Foundation and serves as Chair of the Lung Cancer Section of the American College of Chest Physicians.



**Natalie Brown**

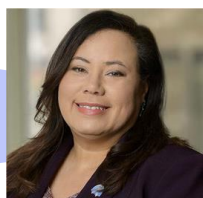
Natalie Brown is in software sales and enjoys providing happiness to her clients. She was diagnosed with stage IV lung cancer during the pandemic, which made things a lot more challenging. She is focused on raising awareness and educating others about lung cancer. Natalie enjoys working out, playing with her puppy, spending time with her family and friends and traveling.



**Deborah Brown, MS, CHES**

Deborah P. Brown is the Chief Mission Officer for the American Lung Association. Prior to this, she served as President and CEO of the Lung Association of the Mid-Atlantic until the ALA became a single nationwide organization, when she became the Executive Vice President for the region. She has been a Certified Health Education Specialist since 1983.

Brown began her career as a health educator responsible for the development, implementation and evaluation of lung disease programs. Her past experiences have included working on advocacy issues in the areas of tobacco, asthma, and healthcare. Passage of Delaware's Clean Indoor Air Act in 2002 is among her accomplishments. She has been involved in passage of the Pennsylvania Clean Indoor Air law, anti-idling legislation, and numerous environmental campaigns.



**Lisa Carter-Bawa, PhD, APRN, ANP-C, FAAN**

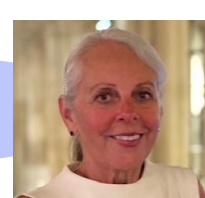
Dr. Lisa Carter-Bawa (formerly Carter-Harris) is a behavioral scientist and nurse practitioner. She is Director of the Cancer Prevention Precision Control Institute at the Center for Discovery & Innovation (CDI) at Hackensack Meridian Health in New Jersey, and Co-Leader of the Cancer Prevention & Control Program and Co-Director of Community Outreach & Engagement for the Georgetown Lombardi Comprehensive Cancer Center consortium. Dr. Carter-Bawa's research focuses on the many factors that influence the decision-making process in lung cancer screening decisions as well as actual screening behavior. She has a particular passion for understanding how stigma influences the decision to screen, or not, for lung cancer. Dr. Carter-Bawa is Chair of the Stigma & Nihilism Task Group of the ACS NLCRT.



**Teresa Conneran**

Terri's journey with lung cancer began with what she perceived as allergy and asthma-like symptoms. She developed pneumonia, which led to identification of a tumor and diagnosis of Stage 3 Non-Small Cell Lung Cancer (NSCLC). Since then she has had three recurrences.

Terri didn't find out until she was three years into her journey that she had a KRAS mutation - and what that meant for her prognosis and options. "I went looking for my community. As cancer patients, we're always looking for commonalities. I wanted to connect with other people who had a cancer caused by a KRAS mutation, but I found there wasn't a specific way to do that -- or a group dedicated to KRAS. So I founded KRAS Kickers to bring together the folks that KRAS affected - the patients and those who love us."



**Dusty Donaldson**

Dusty Donaldson is executive director of the Dusty Joy Foundation (LiveLung), a 501(c)(3) nonprofit with a focus of advancing lung cancer awareness, early detection and compassion for people impacted by lung cancer. Dusty co-authored the book "The ABCs of Lung Cancer for Patients and Advocates." She is co-chair of the Lung Cancer Action Network (LungCAN) and serves as a reviewer for lung cancer research proposals. She is a contributing writer for [www.lungcancer.net](http://www.lungcancer.net) and serves on the NLCRT's Survivorship, Stigma & Nihilism Task Group. Prior to being diagnosed with early-stage lung cancer in 2005, Dusty was a journalist and media relations professional with undergraduate and graduate degrees in journalism.



**Joelle Fathi, DNP, RN, ARNP,  
CTTS, FAAN**

Dr. Fathi is Chief Healthcare Delivery Officer of the GO2 for Lung Cancer. She leads the Excellence in Screening and Care department. Fathi is an adult acute care nurse practitioner with more than 30 years of experience. She spent the last decade caring for patients across the lung cancer continuum and has a proven track record of leading multi-disciplinary teams to produce measurable and sustainable outcomes.



**Jill Feldman**

Jill Feldman is a lung cancer patient and advocate. After losing both parents, two grandparents and an aunt to lung cancer, Jill herself was diagnosed with EGFR positive lung cancer when she was 39 years old with four small children.

Jill is involved with LUNgevity, is Deputy Chair of IASLC's patient advisory board and the NLCRT Steering Committee. She is a member of the programmatic panel for the DOD Lung Cancer Research Program, a planning committee member on IASLC's North America Conference on Lung Cancer.

Jill co-founded the EGFR Resisters, a patient-driven community committed to accelerating research that will prolong and better the lives of people diagnosed with EGFRm lung cancer.



**Ella Kazerooni, MD, MS,  
FACR, FACC, FSAB**

Dr. Kazerooni is Chair of the NLCRT and Professor of Radiology & Internal Medicine, Associate Chair for Clinical Affairs & Director of Cardiothoracic Radiology at the University of Michigan / Michigan Medicine. She is the vice Chair of the NCCN Lung Cancer Screening panel, and chairs both the ACR Committee on Lung Cancer Screening, and ACR's Lung Cancer Screening Registry (LCSR).



**Eugene Manley, Jr., PhD**

Dr. Eugene Manley, Jr, is the Director of STEM Workforce Initiatives at LUNgevity Foundation. He oversees the Minority Mentorship and Training Program, STEM outreach and engagement, and advocates for underrepresented and marginalized populations along the cancer care continuum. He routinely speaks about STEM careers, overcoming barriers, workforce diversity, and barriers and disparities in lung cancer, and also publishes on lived experiences of underserved patients navigating care, lack of diversity in cell lines, and mentorship programs. He uses his experiences in medicine and navigating academia, as well as the experiences of his family dealing with bias and racism in health care, to bring the perspective of those often not at the table.

Dr. Manley earned a Ph.D. in Molecular Biology, Cell Biology, and Biochemistry from Boston University.



**Jamie Ostroff, PhD, CTTS,  
NCTTP**

Jamie S. Ostroff, PhD, CTTS, NCTTP, is Director of Memorial Sloan-Kettering's Tobacco Treatment Program, a multidisciplinary, hospital-based, cessation program for tobacco dependent cancer patients providing evidence-based counseling and pharmacotherapy.

Her research focuses on developing, evaluating, and implementing innovative, theory-driven, multi-level interventions to increase integration of evidence-based tobacco treatments and promote tobacco cessation, particularly among cancer patients, those seeking lung cancer screening, low-income smokers, and other vulnerable populations. Dr. Ostroff has published 150+ peer-reviewed papers demonstrating specific expertise in the assessment and treatment of tobacco dependence as well as tobacco-related health disparities. Dr. Ostroff is currently co-leading a multi-institutional partnership project focusing on training new investigators and building research capacity to address racial and ethnic disparities in smoking prevalence and use of evidence-based tobacco treatment and cessation outcomes.



**James Pantelas**

Jim Pantelas is a 16+ year survivor of advanced-stage lung cancer, COPD, and asbestosis. He has been involved in research oversight, peer review, and a host of advocacy efforts with multiple organizations. For PCORI, he served on an Advisory Panel, reviewed proposals, and is an Ambassador. Jim is a reviewer for multiple programs with CDMRP, sits on a Central Institutional Review Board (CIRB) for NCI, is a long-term IRB member with the University of Michigan and Veterans Administration (VA-AAHS), and has been a Patient Advocate on numerous patient-centered research efforts. He also sits on the executive committee for a joint effort between NCI and the VA, and serves on the National Lung Cancer Roundtable where he serves on their Survivorship, Stigma and Nihilism subcommittee.



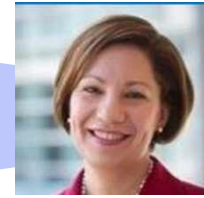
Elyse Park, PhD, MPH

Dr. Park is a clinical health psychologist and health services researcher who focuses on understanding and improving health-related behaviors, especially smoking cessation among vulnerable medical populations. Her research interests extend across physician and patient behavior change, the role of culture on cancer preventive behaviors and resiliency among cancer patients and providers. For her translational research in cancer prevention counseling, Dr. Park has designed and evaluated motivational interviewing interventions.



Maureen Rigney, LICSW

Maureen Rigney is a licensed clinical social worker with GO2 Foundation for Lung Cancer, formerly Lung Cancer Alliance. Currently Director of Support Initiatives, Maureen has worked in a variety of capacities at the organization since 2005. Maureen got her Master's of Social Work Degree at Jane Addams College of Social Work at the University of Illinois at Chicago and prior to joining GO2, worked in community based behavioral health programs.



M. Patricia Rivera, MD, ATSF, FCCP

Dr. Rivera is the Chief, Division of Pulmonary and Critical Care Medicine at the University of Rochester Medical Center, holding the title of C. Jane Davis & C. Robert Davis Distinguished Professor in Pulmonary Medicine. She is also part of the team at Wilmot Cancer Institute as associate director of Diversity, Equity & Inclusion, and as director of the Clinical Lung Screening Program. This month she will be installed as President of the American Thoracic Society (ATS).



Lauren Rosenthal, MPH

Lauren Rosenthal is the Strategic Director of the American Cancer Society National Lung Cancer Roundtable. She is responsible for initiating and directing overall strategy, developing, implementing, and evaluating long-term priority activities and initiatives, and cultivating and maintaining high-level collaborative partnerships with key partners and ACS NLCRT member organizations around shared goals. Prior to joining the ACS NLCRT, Lauren directed key regional and global health programs focusing on the American Cancer Society's global priorities and partnership initiatives, working closely with key policy and government stakeholders, funders, and cancer control partners internally and externally to promote women's cancer and non-communicable diseases programs.



Elizabeth Scharnetzki, PhD

Liz Scharnetzki, PhD, is a Staff Scientist at the Center for Interdisciplinary Population and Health Research at MaineHealth Institute for Research (MHIR). Her research interests lie in understanding how psychosocial processes, like stigma and identity threat, impact the delivery and receipt of health care. Before joining MHIR, Dr. Scharnetzki worked at Vermont's Agency of Human Services, developing policy research projects aimed at promoting social capital within Vermont's criminal justice system. Other prior positions include serving as a lecturer at universities and colleges in both California and Vermont, and working as a Research Technician at one of the NIH Building Infrastructure Leading to Diversity (BUILD) Initiative sites. Dr. Scharnetzki also currently co-leads MaineHealth Institute for Research's Diversity, Equity, and Inclusion Workgroup.



Juanita Segura

Juanita Segura calls herself "a CrossFit diva." and was in the process of opening her own CrossFit studio. The fit and active fit and active wife, and mother was diagnosed with stage 3b lung cancer in November, 2014. The [diagnosis](#) was so shocking that she couldn't bring herself to research the disease or possible treatments. Because her cancer was very aggressive, her doctor ordered chemotherapy and radiation immediately. Then Juanita's doctor ordered biomarker testing, but didn't receive the results for several months. These tests came back showing that she was [ALK-positive](#). This made her a good candidate for immunotherapy. She immediately began treatment and has shown amazing improvement. Juanita is a tireless advocate for those facing a similar diagnosis through her social media and volunteer work. She encourages anyone who's been diagnosed with lung cancer to have biomarker testing performed immediately. Then she recommends assembling a proactive cancer team. Today, Juanita is feeling strong enough to fulfill her dream of opening her own CrossFit studio.





**Cardinale Smith, MD, PhD**

Cardinale B. Smith, MD, PhD, is a Professor of Medicine and Professor of Geriatric Medicine and Palliative Care at the Icahn School of Mt. Sinai. She is Chief Medical Officer for the Tisch Cancer Hospital and VP of Cancer Clinical Affairs. In addition, Dr. Smith is Chief Quality Office for Oncology and Director of the Supportive Oncology Program for the Mount Sinai Health System and Associate Director for Community Outreach & Engagement at the Tisch Cancer Institute.

Dr. Smith’s research team works to improve the quality of care for patients with cancer with a focus on health equity, development of novel models of equitable cancer care delivery and doctor-patient communication. She is 2023 Chair of the ASCO quality symposium.



**Anne Stangl, PhD**

Dr. Anne Stangl is the Senior Advisor for the Elimination of Stigma and Discrimination in the Division of Global HIV and TB at the U.S. Centers for Disease Control and Prevention. She has 21 years of international public health experience in Africa, Asia and the Caribbean. Her research focuses on understanding and addressing the social and structural determinants of health, including intersectional stigma, that impede access to and uptake of health services among underserved populations globally. Anne is a leading expert on health-related stigma and discrimination and has contributed to theoretical understanding of how the stigmatization process operates in the context of health. She holds a Ph.D. in Public Health from Tulane University.



**Jamie Studts, PhD**

Jamie L. Studts, PhD, is a Professor of Medical Oncology at the University of Colorado School of Medicine and Scientific Director of Behavioral Oncology. He is the PI of the Kentucky LEADS Collaborative. He recently joined the National Comprehensive Cancer Network’s Lung Cancer Screening and Smoking Cessation Guideline Panels. Dr. Studts serves as a member of the Steering Committee for the ACS’s National Lung Cancer Roundtable and chairs the Campaign to End Lung Cancer



**Vidya Vedham**

Dr. Vidya Vedham is a Program Director at the National Cancer Institute Center for Global Health where she oversees both research programs and training activities. She also leads and coordinates several equity initiatives at NCI and NIH, and has had developed and managed several research programs to reduce cancer burden in the low- and middle-income countries (LMICs) across various focus areas from implementation science to mobile health technologies and global cancer stigma.

Dr. Vedham is the lead for global implementation science research and the global cancer stigma research programs at CGH. She is the NCI lead for the mobile health technologies program at NIH and her research portfolio also includes cancers with infectious etiology.

Dr. Vedham leads the Short-term scientist exchange program (STSEP) at NCI that supports developing research capabilities in LMIC institutions by training LMIC researchers at NCI.

**Save the Date!**



**ACS NLCRT Annual Meeting**

**December 4-5, 2023  
Grand Hyatt Hotel  
Washington, DC**